



Stoginiai ventilatoriai

Roof fans

Dachventilatoren

Крышные вентиляторы



Stoginiai ventilatoriai, naudojami oro ištraukimui iš patalpos. Sparnuotė uždengta tinklo grotelėmis, apsaugančiomis ją nuo pašalinių daiktų, galinčių patekti iš aplinkos ir pažeisti sparnuotę mechaniškai. Nenaudojami užteršto oro, agresyvių, sprogių dujų transportavimui.

Sparnuotė: atgal lenktais sparneliais, cinkuoto plieno.

Variklis: išorinis rotorius, tiesioginė pavara, integruota termokontaktinė variklio apsauga, ilgai tarnaujantys nereikalaujantys priežiūros guoliai.

Korpusas: iš cinkuotos skardos.



Dachventilatoren, sie werden für Abluft aus dem Raum verwendet. Laufrad ist mit Netzgrill abgedeckt, der es vor Gegenständen schützt, die aus der Umgebung gelangen und Laufrad mechanisch beschädigen können. Nicht geeignet für die Beförderung von verschmutzter Luft, aggressiven, explosiven Gasen.

Laufrad ist rückwärts gekrümmt, aus verzinktem Stahl.

Der Motor: Außenrotor, Direktantrieb, integrierter Thermokontakt-Motorschutz, dauerhafte, keine Pflege erfordernde Lager.

Das Gehäuse: aus verzinktem Blech.



Roof fans with vertical discharge are used to extract air from different premises. Motorised impeller is protected with a meshwork grill which offers protection against external objects that could cause mechanical damage to the impeller. Not suitable for polluted air, aggressive and explosive gases.

Impeller with backward curved blades made of galvanized steel.

Motor: external rotor, motor protection built-in thermal-contact, free-maintenance ball bearings.

Housing: made of galvanized steel.



Крышные вентиляторы для вытяжки воздуха из помещений. Крыльчатка закрыта сетчатой решёткой, защищающей её от попадающих извне посторонних предметов, способных механически повредить крыльчатку. Не используются при транспортировке загрязнённого воздуха, агрессивных, взрывоопасных газов.

Крыльчатка: загнутые назад лопатки, оцинкованная сталь.

Двигатель: наружный ротор, прямая передача, встроенные термоконтакты двигателя, не требующие ухода подшипники с длительным сроком службы.

Корпус: оцинкованной жести.

## Accessories


 KS  
p. 196

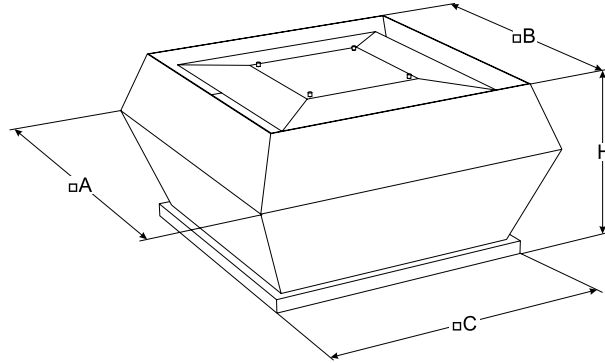
 KSP  
p. 195

 FSV  
p. 201

 LSV  
p. 197

 ATS  
p. 183

 TGRV  
p. 157



| Type          | Dimensions [mm] |      |      |     |
|---------------|-----------------|------|------|-----|
|               | A               | B    | C    | H   |
| VSV 250-2 L1  | 406             | 326  | 335  | 253 |
| VSV 250-2S L1 | 420             | 319  | 335  | 298 |
| VSV 311       | 560             | 470  | 435  | 330 |
| VSV 355       | 720             | 618  | 595  | 400 |
| VSV 400       | 720             | 618  | 595  | 435 |
| VSV 450       | 900             | 748  | 665  | 475 |
| VSV 500       | 900             | 748  | 665  | 495 |
| VSV 560       | 1150            | 1010 | 939  | 590 |
| VSV 630       | 1150            | 1010 | 944  | 626 |
| VSV 710       | 1350            | 1176 | 1035 | 717 |

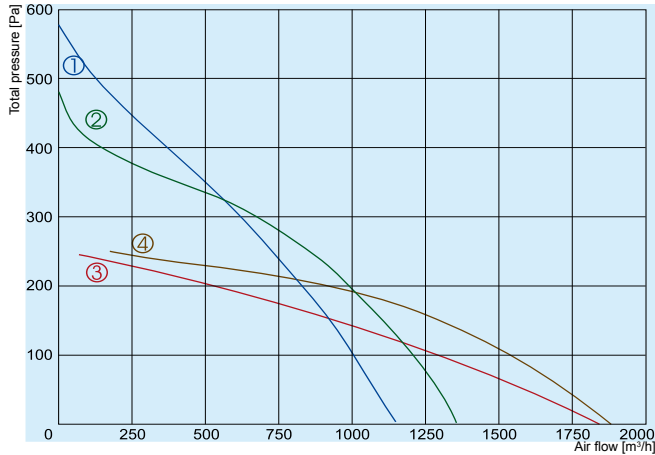
Accessories



TGRT  
p. 158

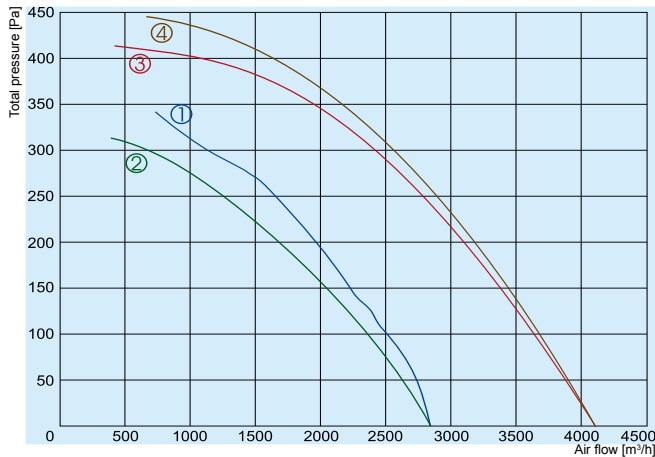


MTY  
p. 160



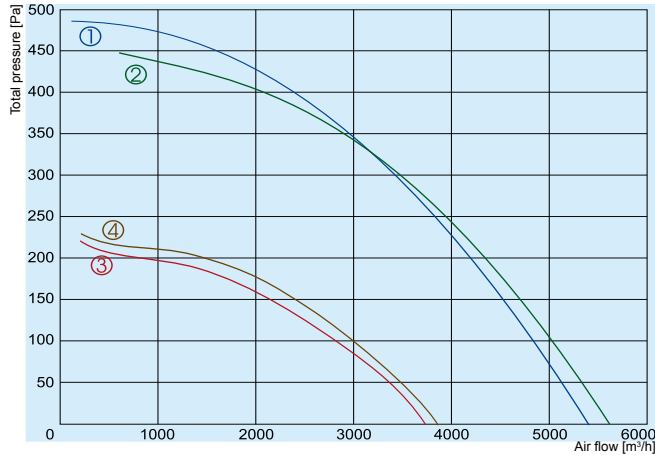
- ① VSV 250-2 L1
- ② VSV 250-2S L1
- ③ VSV 311-4 L1
- ④ VSV 311-4 L3

|                                      |                      | 250-2 L1       | 250-2S L1      | 311-4 L1       | 311-4 L3 |
|--------------------------------------|----------------------|----------------|----------------|----------------|----------|
| Voltage/Frequency                    | [V/Hz]               | 230/50         | 230/50         | 230/50         | 400/50   |
| Power consumption                    | [kW]                 | 0,155          | 0,185          | 0,17           | 0,15     |
| Current                              | [A]                  | 0,7            | 0,81           | 0,90           | 0,36     |
| Speed                                | [min <sup>-1</sup> ] | 2600           | 2650           | 1300           | 1400     |
| Max. airflow                         | [m <sup>3</sup> /h]  | 1150           | 1350           | 1840           | 1880     |
| Max. air temperature                 | [°C]                 | 50             | 50             | 50             | 70       |
| Total sound pressure level at 1 m    | [dBA]                | 70             | 68             | 65             | 66       |
| Total sound pressure level at 4/10 m | [dBA]                | 47/39          | 45/37          | 42/34          | 43/35    |
| Speed controller                     |                      | TGRV 1,5/MTY 1 | TGRV 1,5/MTY 1 | TGRV 1,5/MTY 1 | TGRT 1   |
| Weight                               | [kg]                 | 8,3            | 8,1            | 18             | 18       |
| Wiring diagram                       |                      | 3              | 3              | No. 1          | No. 2    |
| Protection class:                    | motor                | IP-44          | IP-44          | IP-44          | IP-54    |
|                                      | terminal box         | IP-54          | IP-54          | IP-54          | IP-54    |



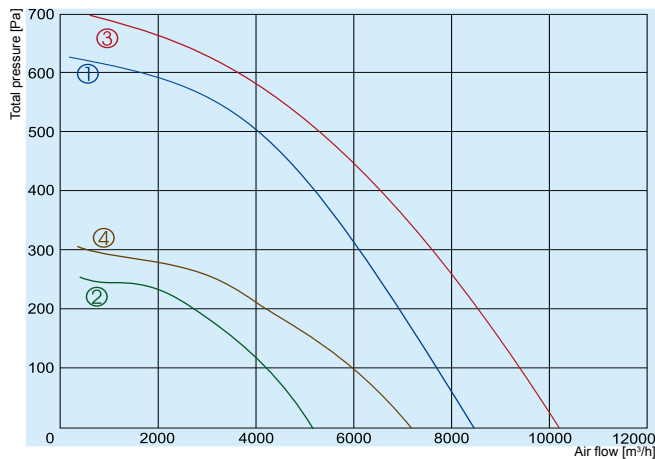
- ① VSV 355-4 L1
- ② VSV 355-4 L3
- ③ VSV 400-4 L1
- ④ VSV 400-4 L3

|                                      |                      | 355-4 L1       | 355-4 L3 | 400-4 L1     | 400-4 L3 |
|--------------------------------------|----------------------|----------------|----------|--------------|----------|
| Voltage/Frequency                    | [V/Hz]               | 230/50         | 400/50   | 230/50       | 400/50   |
| Power consumption                    | [kW]                 | 0,31           | 0,27     | 0,52         | 0,46     |
| Current                              | [A]                  | 1,35           | 0,47     | 2,20         | 0,85     |
| Speed                                | [min <sup>-1</sup> ] | 1370           | 1310     | 1360         | 1340     |
| Max. airflow                         | [m <sup>3</sup> /h]  | 2850           | 2850     | 4100         | 4100     |
| Max. air temperature                 | [°C]                 | 65             | 60       | 40           | 55       |
| Total sound pressure level at 1 m    | [dBA]                | 71             | 70       | 70           | 70       |
| Total sound pressure level at 4/10 m | [dBA]                | 48/40          | 47/39    | 47/39        | 47/39    |
| Speed controller                     |                      | TGRV 1,5/MTY 2 | TGRT 1   | TGRV 3/MTY 4 | TGRT 1   |
| Weight                               | [kg]                 | 28,4           | 28,4     | 32           | 32       |
| Wiring diagram                       |                      | No. 1          | No. 2    | No. 1        | No. 2    |
| Protection class:                    | motor                | IP-54          | IP-54    | IP-54        | IP-54    |
|                                      | terminal box         | IP-54          | IP-54    | IP-54        | IP-54    |



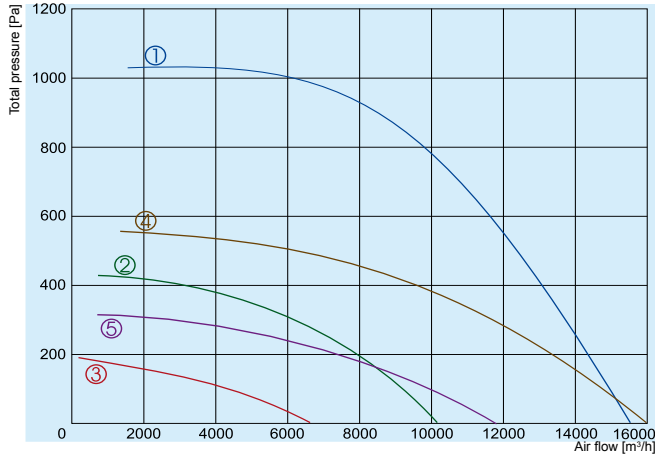
- ① — VSV 450-4 L1
- ② — VSV 450-4 L3
- ③ — VSV 450-6 L1
- ④ — VSV 450-6 L3

|                                      |                      | 450-4 L1 | 450-4 L3 | 450-6 L1 | 450-6 L3 |
|--------------------------------------|----------------------|----------|----------|----------|----------|
| Voltage/Frequency                    | [V/Hz]               | 230/50   | 400/50   | 230/50   | 400/50   |
| Power consumption                    | [kW]                 | 0,74     | 0,69     | 0,24     | 0,26     |
| Current                              | [A]                  | 3,20     | 1,30     | 1,05     | 0,63     |
| Speed                                | [min <sup>-1</sup> ] | 1280     | 1230     | 840      | 870      |
| Max. airflow                         | [m <sup>3</sup> /h]  | 5400     | 5600     | 3750     | 3900     |
| Max. air temperature                 | [°C]                 | 60       | 40       | 60       | 60       |
| Total sound pressure level at 1 m    | [dBA]                | 76       | 76       | 67       | 60       |
| Total sound pressure level at 4/10 m | [dBA]                | 53/45    | 53/45    | 44/36    | 37/29    |
| Speed controller                     |                      | TGRV 4   | TGRT 2   | TGRV 2   | TGRT 1   |
| Weight                               | [kg]                 | 47,6     | 49,4     | 47,1     | 47,1     |
| Wiring diagram                       |                      | No. 1    | No. 2    | No. 1    | No. 2    |
| Protection class:                    | motor                | IP-54    | IP-54    | IP-54    | IP-54    |
|                                      | terminal box         | IP-54    | IP-54    | IP-54    | IP-54    |



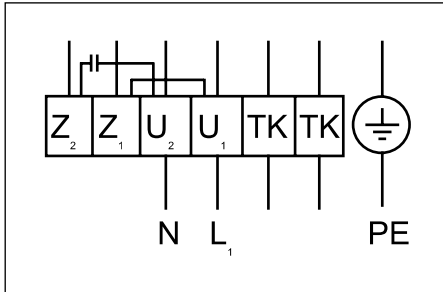
- ① — VSV 500-4 L3
- ② — VSV 500-6 L3
- ③ — VSV 560-4 L3
- ④ — VSV 560-6 L3

|                                      |                      | 500-4 L3 | 500-6 L3 | 560-4 L3 | 560-6 L3 |
|--------------------------------------|----------------------|----------|----------|----------|----------|
| Voltage/Frequency                    | [V/Hz]               | 400/50   | 400/50   | 400/50   | 400/50   |
| Power consumption                    | [kW]                 | 1,25     | 0,39     | 1,80     | 0,61     |
| Current                              | [A]                  | 2,30     | 0,81     | 3,40     | 1,05     |
| Speed                                | [min <sup>-1</sup> ] | 1340     | 850      | 1230     | 830      |
| Max. airflow                         | [m <sup>3</sup> /h]  | 8400     | 5150     | 10200    | 7550     |
| Max. air temperature                 | [°C]                 | 45       | 45       | 40       | 40       |
| Total sound pressure level at 1 m    | [dBA]                | 78       | 66       | 79       | 68       |
| Total sound pressure level at 4/10 m | [dBA]                | 55/47    | 43/35    | 56/48    | 45/37    |
| Speed controller                     |                      | TGRT 3   | TGRT 1   | TGRT 4   | TGRT 2   |
| Weight                               | [kg]                 | 56       | 50       | 128      | 119,5    |
| Wiring diagram                       |                      | No. 2    | No. 2    | No. 2    | No. 2    |
| Protection class:                    | motor                | IP-54    | IP-54    | IP-54    | IP-54    |
|                                      | terminal box         | IP-54    | IP-54    | IP-54    | IP-54    |

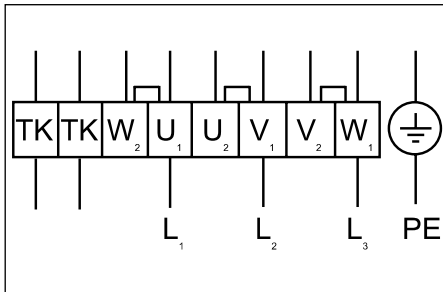


- ① VSV 630-4 L3
- ② VSV 630-6 L3
- ③ VSV 630-8 L3
- ④ VSV 710-6 L3
- ⑤ VSV 710-8 L3

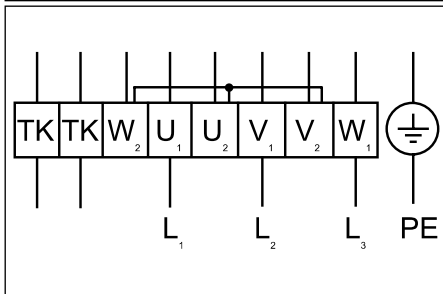
|                                      |                      | 630-4 L3 | 630-6 L3 | 630-8 L3 | 710-6 L3 | 710-8 L3 |
|--------------------------------------|----------------------|----------|----------|----------|----------|----------|
| Voltage/Frequency                    | [V/Hz]               | 400/50   | 400/50   | 400/50   | 400/50   | 400/50   |
| Power consumption                    | [kW]                 | 4,1      | 1,05     | 0,38     | 2,0      | 0,96     |
| Current                              | [A]                  | 6,80     | 2,2      | 0,88     | 4,0      | 1,9      |
| Speed                                | [min <sup>-1</sup> ] | 1380     | 870      | 530      | 890      | 650      |
| Max. airflow                         | [m <sup>3</sup> /h]  | 15600    | 10120    | 6620     | 16000    | 11900    |
| Max. air temperature                 | [°C]                 | 40       | 70       | 60       | 40       | 40       |
| Total sound pressure level at 1 m    | [dBA]                | 86       | 85       | 64       | 78       | 70       |
| Total sound pressure level at 4/10 m | [dBA]                | 63/55    | 62/54    | 41/33    | 55/47    | 47/39    |
| Speed controller                     |                      | TGRT 7   | TGRT 3   | TGRT 1   | TGRT 5   | TGRT 2   |
| Weight                               | [kg]                 | 140      | 124      | 108      | 156      | 132      |
| Wiring diagram                       |                      | No. 2    | No. 2    | No. 2    | No. 2    | No. 2    |
| Protection class:                    | motor                | IP-54    | IP-54    | IP-54    | IP-54    | IP-54    |
|                                      | terminal box         | IP-54    | IP-54    | IP-54    | IP-54    | IP-54    |


**Wiring diagram No. 1 (1~230V)**

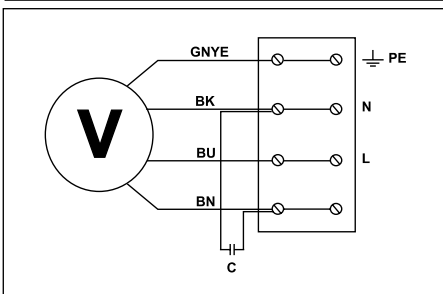
**U<sub>1</sub>** - brown / braun  
**U<sub>2</sub>** - blue / blau  
**Z<sub>1</sub>** - black / schwarz  
**Z<sub>2</sub>** - orange / orange  
**TK** - white / weiß  
**PE** - yellow-black / gelb-schwarz


**Wiring diagram No. 2 (Δ - 3~400V)**

**U<sub>1</sub>** - brown / braun  
**V<sub>1</sub>** - blue / blau  
**W<sub>1</sub>** - black / schwarz  
**U<sub>2</sub>** - red / rot  
**V<sub>2</sub>** - gray / grau  
**W<sub>2</sub>** - orange / orange  
**TK** - white / weiß


**Wiring diagram No. 2 (Y - 3~400V)**

**U<sub>1</sub>** - brown / braun  
**V<sub>1</sub>** - blue / blau  
**W<sub>1</sub>** - black / schwarz  
**U<sub>2</sub>** - red / rot  
**V<sub>2</sub>** - gray / grau  
**W<sub>2</sub>** - orange / orange  
**TK** - white / weiß


**Wiring diagram No. 3**

**GNYE** - green-yellow  
**BK** - black  
**BU** - blue  
**BN** - brown